



# Summerville

The Summerville is the type of house that, once completed, will look like it's been in the neighborhood for years. It has traditional styling and comes with a finished second level, which is unusual for a modular Cape plan. The large front room opens to the dining and large kitchen area with plenty of entertaining room at the bar. The plan includes a master bedroom and private bath as well as a ½ guest bath down stairs. Upstairs there is room to grow with 2 bedrooms and a full bath. The site built garage and porch finish off this quaint plan.

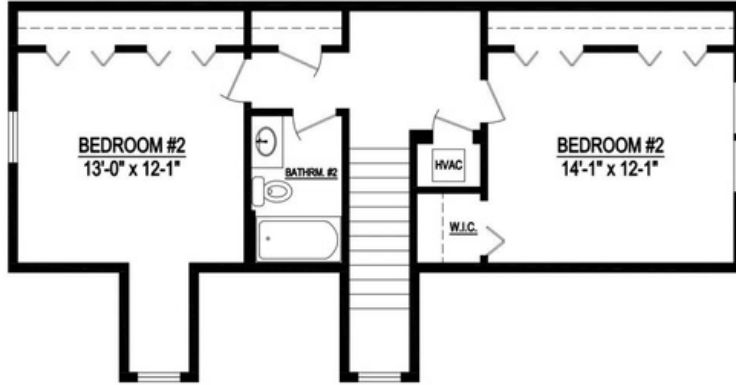
The square footage and other dimensions on our floor plans are approximate. Renderings are not intended to be an accurate representation of the home and are often shown with optional features and/or third-party additions that can be added at additional cost if available in your region or situation.





# AFFINITY

a VANTEM company



2nd LEVEL LAYOUT



1st LEVEL

## SUMMERVILLE

1176 Sq. Ft. Heated/Cooled (1st Level)  
712 Sq. Ft. Heated/Cooled (2nd Level)

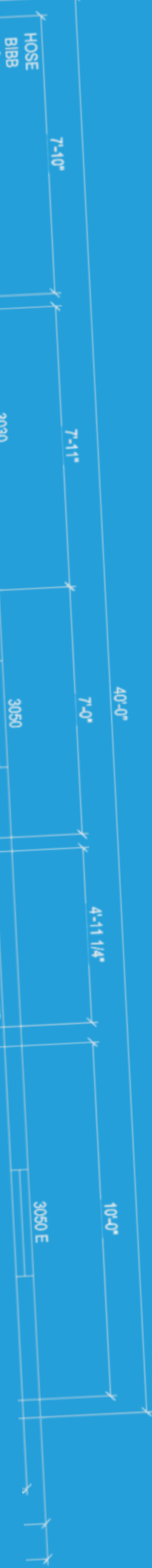


229-482-1200

[AFFINITYMODULAR.COM](http://AFFINITYMODULAR.COM)



62 MURRAY BLVD LAKELAND, GA 31635





## Summerville Specifications:

3 Bedroom / 2.5 Bathroom  
1274 Sq. Ft. Heated/Cooled (1st)  
712 Sq. Ft. Heated/Cooled (2nd)

