

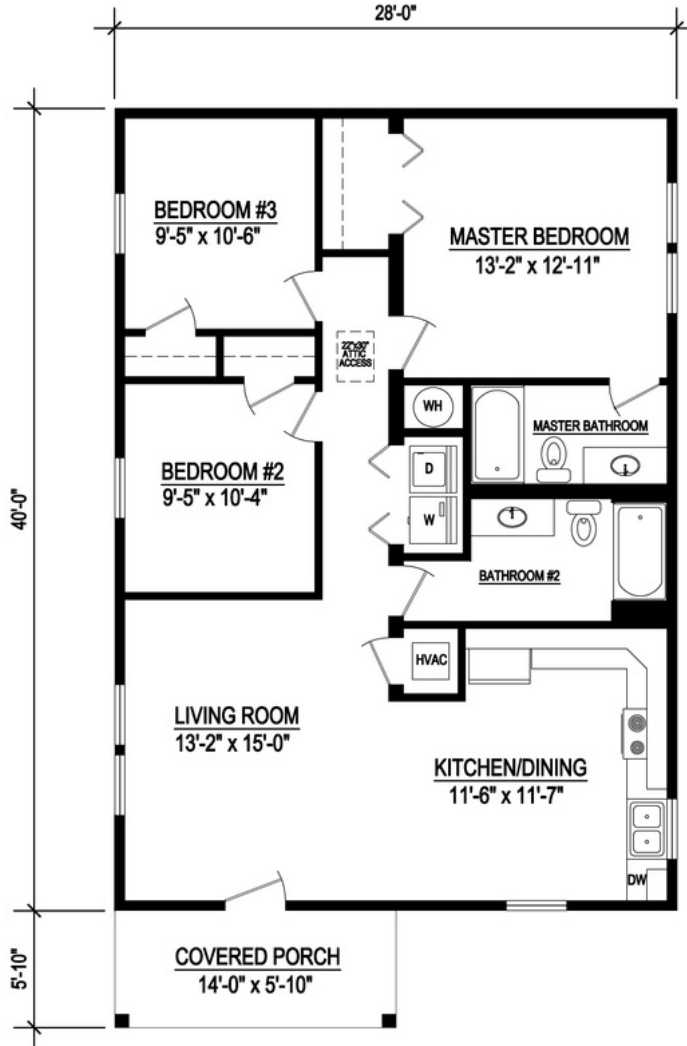


## Glenn Cove

Open layouts are becoming more and more popular, making up the majority of today's bestselling plans. The Glenn Cove has a large master bedroom with a walk in closet. Two additional guest bedrooms, two full baths and a convenient hall laundry makes up the rest of the design. Heating and cooling this 1,120 square foot home is a very economical. The Glenn Cove will make a great starter home for a young family.

The square footage and other dimensions on our floor plans are approximate. Renderings are not intended to be an accurate representation of the home and are often shown with optional features and/or third-party additions that can be added at additional cost if available in your region or situation.





# GLENN COVE

1120 Sq. Ft. Heated/Cooled  
1202 Sq. Ft. Under Roof



## Glenn Cove Specifications:

3 Bedroom / 2 Bathroom  
1120 Sq. Ft. Heated/Cooled  
1202 Sq. Ft. Under Roof

