



# Baypine

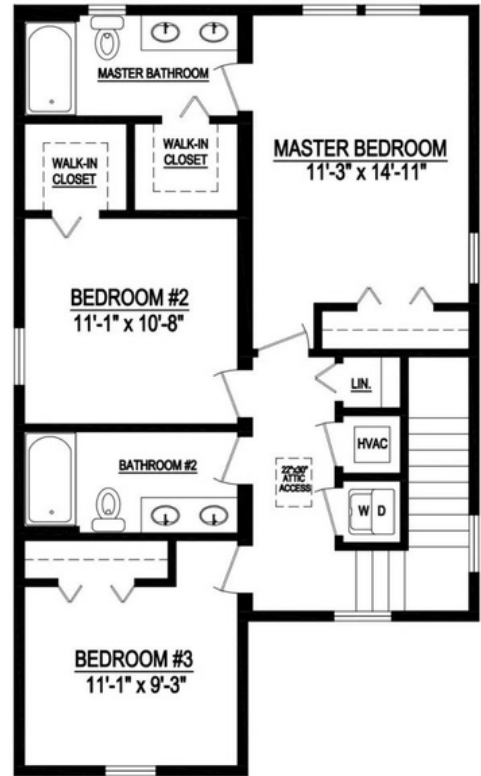
The Baypine floor plan provides 1,739 square feet of heated/cooled space, with a total of 2,020 square feet of under roof space.

The square footage and other dimensions on our floor plans are approximate. Renderings are not intended to be an accurate representation of the home and are often shown with optional features and/or third-party additions that can be added at additional cost if available in your region or situation.





1st LEVEL



2nd LEVEL

# BAYPINE

1739 Sq. Ft. Heated/Cooled  
2020 Sq. Ft. Under Roof





## Baypine Specifications:

4 Bedroom / 2.5 Bathroom  
1739 Sq. Ft. Heated/Cooled  
2020 Sq. Ft. Under Roof

