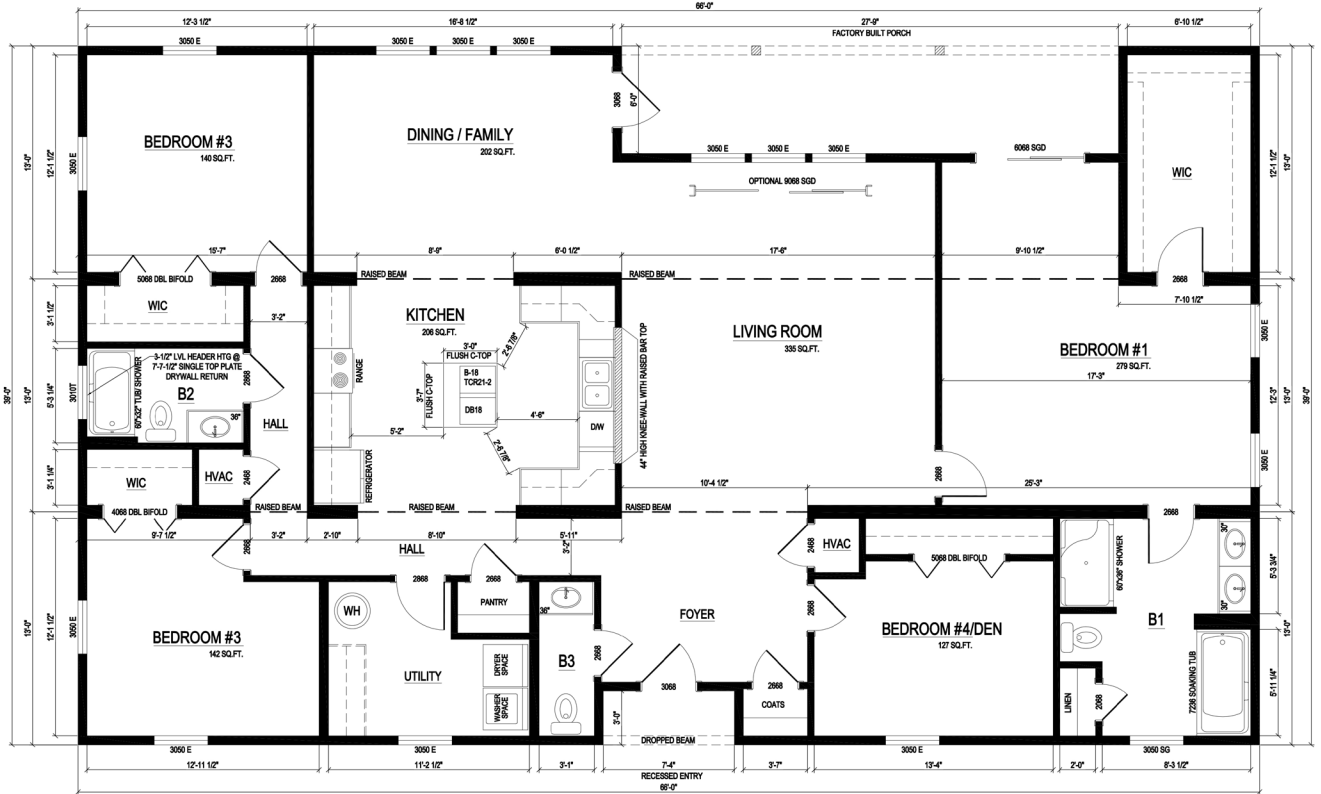


## Sea Breeze

A spacious home designed for enjoying family and entertaining, you'll find plenty of room to do both. Enjoy the large, covered porch on the rear of the home accessible from the master bedroom as well as the dining/family or living room. The home is available with 3 or 4 bedrooms and 2½ baths, and the large kitchen is perfectly arranged for informal dining and entertaining. You will appreciate the generous storage in this home including a large utility room that can accommodate cabinets or a freezer.

*The square footage and other dimensions on our floor plans are approximate. Renderings are not intended to be an accurate representation of the home and are often shown with optional features and/or third-party additions that can be added at additional cost if available in your region or situation.*



# SEA BREEZE

2385 Sq. Ft. Heated/Cooled

2574 Sq. Ft. Under Roof



**Sea Breeze  
Specifications:**

**4 Bedroom / 2.5 Bath**

2385 Sq. Ft. Heated/Cooled

2574 Sq. Ft. Under Roof



**Affinity Building Systems**

62 Murray Blvd. Lakeland, GA

229-482-1200 • [affinitybuildingsystems.com](http://affinitybuildingsystems.com)