

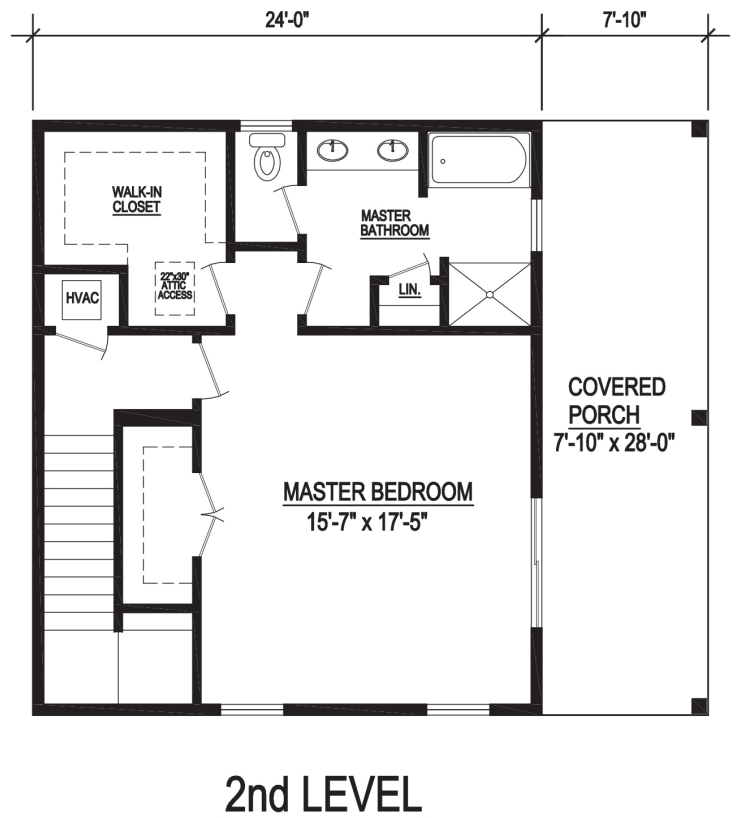


Kingfisher

With three porches, this floorplan is perfect for leisure and entertaining. The Kingfisher floor plan provides 1,680 square feet of heated/cooled space, with a total of 2,124 square feet of under roof space. You can see model of this home in person at our facility in Lakeland, Georgia.

The square footage and other dimensions on our floor plans are approximate. Renderings are not intended to be an accurate representation of the home and are often shown with optional features and/or third-party additions that can be added at additional cost if available in your region or situation.

AFFINITY



KINGFISHER

1680 Sq. Ft. Heated/Cooled
2124 Sq. Ft. Under Roof





**Kingfisher
Specifications:**

3 Bedroom / 2 Bath

1680 Sq. Ft. Heated/Cooled

2124 Sq. Ft. Under Roof



Affinity Building Systems

62 Murray Blvd. Lakeland, GA

229-482-1200 • affinitybuildingsystems.com

KINGFISHER