

# Affinity News

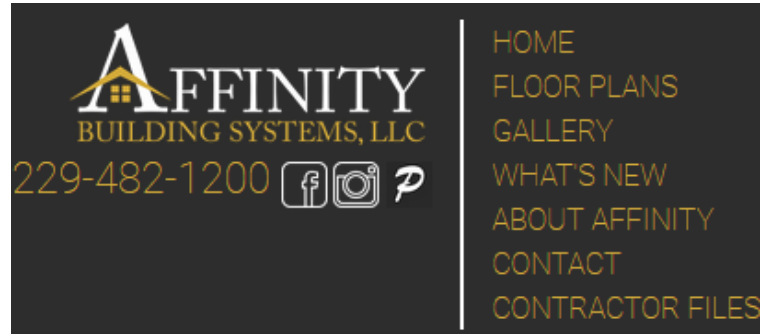
*Plenty of things to build this year!*  
After the storm.

Affinity is busy building homes for those whose homes were lost or damaged by Hurricane Irma, but that's not all. Business is brisk this year. A reported housing shortage combined with the reputation that our homes have superior strength and quality has given us a great start in 2018.

We have added a section to our web site to give builders a speedier submittal process for their state stamped plans. Previously stamped plans are now posted to the web site. Some plans will have to be brought up to the current code, but this process goes much faster than starting from scratch. You are not able to change anything structural. Also the plans must be built to the wind speed that is listed on the plan. But with plans taking 4-6 weeks, this can reduce that time to 1-2 weeks.

To get to these plans, scroll down to the bottom of the page and to the right of our logo and phone number, click on Contractor Files. Then select the state you want to view plans for. Give this number to your Affinity representative .

"There is no traffic jamb along the extra mile."  
Roger Staubach



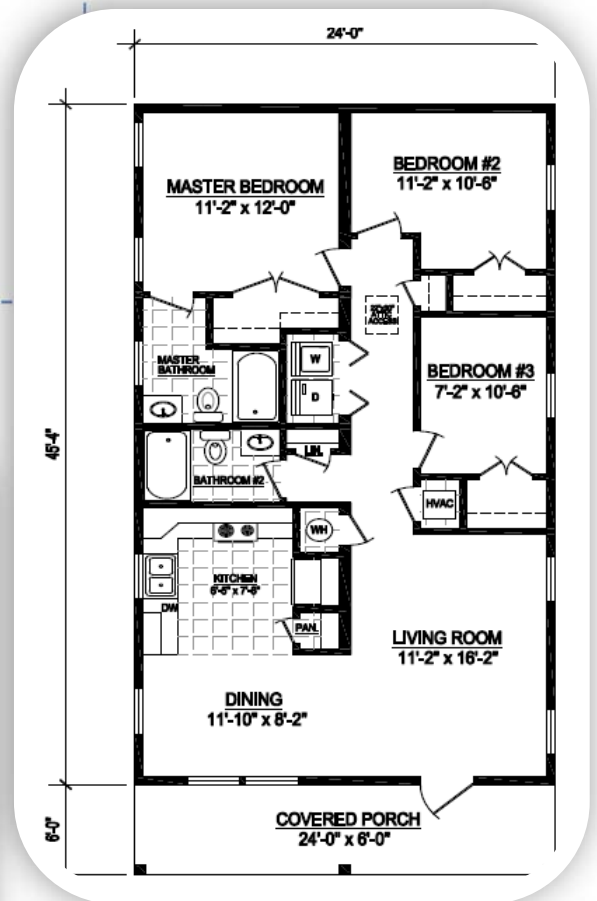
**AFFINITY**  
BUILDING SYSTEMS, LLC  
229-482-1200

HOME  
FLOOR PLANS  
GALLERY  
WHAT'S NEW  
ABOUT AFFINITY  
CONTACT  
CONTRACTOR FILES

Our number one REPINNED plan on Pinterest.

## Fish Hawke

1,088 SF H/C , 1,232 Under Roof



## What's New!

How about an electric wall hung fireplace? This is available in a variety of sizes and colors. Sized at 50" x 22" with an option price of \$520 for the black framed model and \$628 for the mirrored glass front model. They heat up to 400 SF, have 5 flame settings and 2 heat settings which are controlled by remote. Ask your sales person for a brochure today.



Touchstone Fireplace flames will exceed your expectations. Use it to relax and experience the calming effect of realistic flames. Your friends may even ask if it is a real gas fireplace?

## Didjano?



COTTON

**Didjano** that when you upgrade to Merillat Classic cabinets you now get soft close hinges on doors as well as dovetail drawer boxes with full extension soft close drawer guides?

**Didjano** that Merillat Basic series cabinets now offers a painted cabinet. Order Collins, Homestead or Wesley series. (Available in "Cotton" finish)

**Didjano** that both Merillat Classic and Basic construction provide a 15# per SF load capacity on their shelves?



## Barn Doors

A [recent study conducted by website Zillow Digs](#) found that these contemporary yet rustic sliding doors can help a home sell as many as 57 days faster and at a higher price point. The study analyzed descriptions on the listings of more than 2 million homes sold between January 2014 and March 2016 to see how certain keywords affect a home's sale.

Of all the terms analyzed, "barn doors" brought the highest premium, with homes whose listings mentioned this door type selling for an average of 13.4 percent above expected values. The "craftsman meets farmhouse" design concept is clearly resonating with today's homeowners.

Consumers like the distinctive, upscale look as well as the doors' functionality when it comes to closing off large spaces. Barn doors are also easy to install and are amazingly versatile in terms of color, size, and door style.

Subway tile, farmhouse sinks, Shaker cabinets, quartz countertops also have shown to improve the salability of your home.



Barn Door option in place of a standard interior door  
 Solid wood—Knotty Alder “Z” panel—Unfinished  
 Bronze—30” opening \$1,100, Bronze—36” opening \$1,168  
 Stainless 30” opening \$1,227, Stainless 36” opening \$1,294

## Subway Tile

...

From Daltile, Rittenhouse Square is a great subway tile collection which comes in a wide variety of colors. Offered in both matte and glossy finish, used for shower walls or tub surround and looks great as a backsplash for your kitchen. The tile is also available with a beveled edge as shown in the photo.

\$8.00 per lineal foot installed for a kitchen backsplash and \$11.00 per SF for a tub/shower wall.



**Introducing Trulux  
Under Cabinet LED  
Tape Lighting**



Available now,  
optional LED strip  
lighting. The option  
includes all lights,  
wire & dimmable  
switch.  
\$26. Per Lineal Foot  
of wall cabinet

**Record-High Lumber Costs Adding  
More than \$7,000 to the Price of a Home**

All of the wall and roof framing lumber in our homes has been affected by the tariffs assigned to imports coming from Canada. Whatever your political view, when it hits your pocket book, it becomes “your” issue.

NAHB Chairman Randy Noel stated in a recent article on CNBC,

"Strong demand for housing is keeping builders optimistic about future market conditions," said NAHB Chairman Randy Noel, a custom homebuilder from La-Place, Louisiana. "However, builders are facing supply-side constraints, such as a lack of buildable lots and increasing construction material costs. Tariffs placed on Canadian lumber and other imported products are pushing up prices and hurting housing affordability."

There is no getting around the fact that the U.S. must rely on Canada to fully meet its lumber needs. More than one-third of the lumber consumed in the U.S. last year was imported, and more than 95 percent of the imports came from Canada.

Lumber accounts for a larger share of the cost of a home than any other building material. At current prices, lumber accounts for approximately \$22,000 of the cost of constructing a typical single-family home.

**"If you define yourself by how you differ from the competition, you're probably in trouble." – Omar Hamoui, AdMob co-founder**



## The Kingsland — Key West



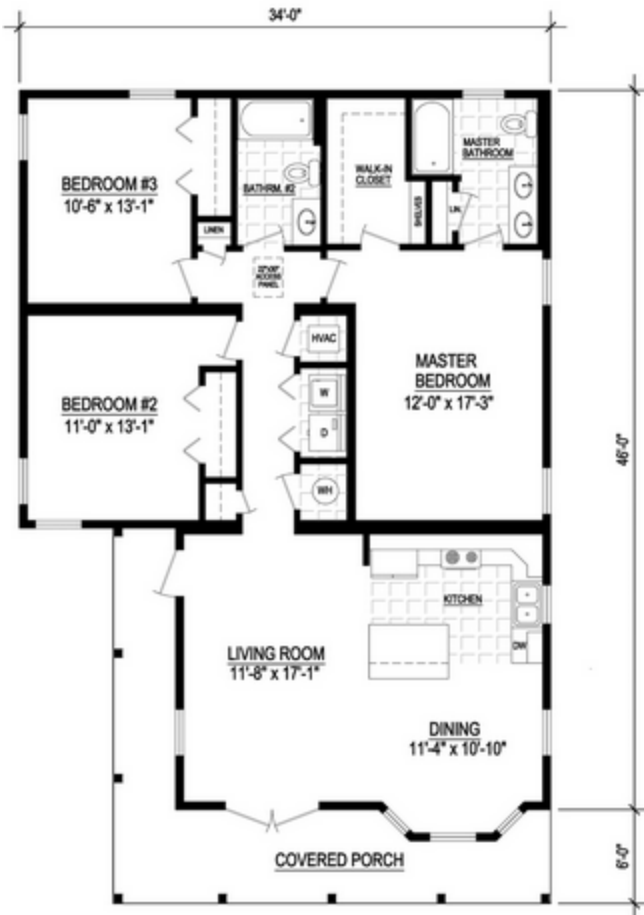
A difficult **first** house for a new Affinity Builder. Island Angles, located in Key West set their first home on Patterson Avenue in Key West, on May 3rd. The Kingsland is a 4 box ranch with factory built porches integrated into the design. Mark McLaughlan has been around this industry for a long time, although it wasn't until recently that he decided to go at it again.

### RHEEM Surcharge

It was announced earlier that Affinity was implementing a surcharge due to price increases we received from Rheem on both HVAC and water heaters. To clarify further, if you have a 2 story house, with 2 HVAC systems and 1 water heater, the surcharge will be \$1,010. Duplexes, or other multi family homes, that have individual HVAC systems and water heaters are charged the \$575 per living unit. As an example a tri-plex would be \$1,725 (3x \$575).

The surcharge is for any home priced since January 1, 2018 that we do not have a purchase agreement on. If the home was priced prior to January 1, 2018, it must be turned in for a new estimate.

## The Kingsland—now in Key West



## KINGSLAND

1400 Sq. Ft. Heated/Cooled  
1625 Sq. Ft. Under Roof

*Base price—\$84,564.*

*3 Bedrooms 2 Baths*

*Factory Installed porch,  
and walk out bay window  
in dining room*

