



## Michael Aranda, Marathon, Florida

Michael Aranda, an experienced home builder in South Florida took time out to build his own home using Affinity Building Systems as his Modular supplier. The unfinished cape was his design and includes much of his own personal touch including the beautiful, expansive wrap around porch.

**Square Feet H/C—1380, lower level**  
**Square Feet U/R—1740, incl. upper level**

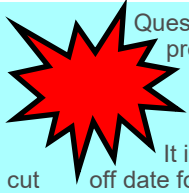
## Top Trends for Kitchen Cabinets & Kitchen Fixtures

It pays to get informed about the current kitchen design trends for 2015. When decorating a home, it's important to strike a balance between the trendy and the classic. Kitchen's are costly, and the work done will need to last for years. With that in mind, experts suggest trends that they predict will have staying power that goes well beyond the year 2015. Maple kitchen cabinets have been in strong demand in the recent past, and they remain current for 2015 and beyond. Another up-to-the-minute look: interesting combinations of complementary woods and wood stains.



Classic Oak Kitchen Cabinets by Merillat.  
From the Article, "Fresh Kitchen Design Trends for 2015 and Beyond,"  
Posted at DecoratorsWisdom.com.

## 5th Edition (2014) Florida Building Code (FBC) taking effect June 30, 2015



Questions always come up when a new code goes into effect. Questions like "What about the house I just had approved in March"? Or... "I just built this house and plan on building another one just like it, do I have to re-submit it to the new code"? Provisions have been made by the state of Florida which were designed for just these types of situations.

It is our understanding that In order to use your 2010 Florida State sealed plans that were approved prior to the cut off date for the 5th Edition (2014) FBC, you must have a signed contract in place with us prior to June 30, 2015. Verbiage on the contract must include (mirror) the same information that is required by an application for permit, specifically the date of execution, the building owner or dealer, and the anticipated date of completion.

Construction by the manufacturer must commence within 6 months of the contracts execution. Verification that this plan is in compliance with all the necessary information required by the state of Florida must be supplied by the independent inspector who inspects the home in our factory while it is being built. This is in turn reported to the 3rd party Inspection Agency, who reports it to the Florida Department of Business and Professional regulation.

Take a look at what you have in place now with your customers. It may be in their best interest to come to the table now instead of later. Contracting Later than June 30th means plans must be re-submitted for approval under the new code at additional expense.

### Affinity "DIDJANO"

**"Didjano"** that the standard porch post for the Affinity Freedom and Capstone series is a 4x4 pressure treated post wrapped with a special 6x6 PVC pre-cast material for a superior finished look? This is a substantial upgrade as many competitors only use the 4x4 plain post.

**"Didjano"** that Affinity uses a 200 amp 40/40 breaker box on all models as a standard specification? The panel box provides 40 spaces for forty circuits which allows extra spaces for builders/homeowners to add extra breakers/circuits for hot tubs, outside lighting, sprinkler systems, etc... Many of our competitors use a less expensive 30/40 panel box which might require the builder/homeowner to add a sub-panel box for additional circuits at an additional expense.

**"Didjano"** that Charles Crews, our production manager is a former builder? Between 1979 and 2007 Charles ran a crew that did framing and siding on apartment buildings in Atlanta GA. He also built homes in Atlanta and right in our backyard in Nashville, Berrien County, GA. Charles brings a tremendous amount of experience to Affinity with his hands-on practical knowledge of both trades (subs) and estimating of material and labor. As he puts it, "Been there, done that!" Next time you have a question, you know who to call!

### More 2015 Kitchen Trends

- Oak is shaping up to be a clear-cut winner; lately, oak kitchen cabinets have seen a dramatic upward surge in demand
- Mixed Wood & Colors Are Trends for 2015
- White is one of the freshest new "neutrals," and it's a color that makes perfect sense in the kitchen
- Forget Stainless Steel Fixtures. Think Oil-Rubbed Bronze and Other Up-To-Date Finishes.
- Warm Metal Kitchen Fixtures and Accents
- White or Colorful Sinks
- Open Floor Plan Designs for the Kitchen and the Home



#### **Marsala**



Oil-rubbed bronze pairs well with [Pantone's choice for 2015 color of the year, Marsala.](#) which is a lovely deep wine color that's a suitable color choice for many interior surfaces, from bricks to textiles.



When our builders combine their skill with an Affinity home the results can be spectacular.

Having a flare for design and knowing what sells allows you, "OUR BUILDER" to dial in your homes to the exact wants, needs and desires of your customers.

Here are a couple of examples of homes where the builder has done just that!

And the finishing touches are not limited strictly to the inside of the home.

Adding screen rooms and other exterior elements can be a way for you to add value and profit to the sale.

**AFFINITY**  
Building Systems



Currently celebrating 37 years in the industry, The Southeast Building Conference (SEBC) is the largest building industry trade show in the southeast. The 2015 SEBC is a two-day (July 17-18) Expo Show and a three-day (July 16-18) networking, professional development and continuing education conference for anyone and everyone working in the building industry. Visit our booth at the SEBC Show, July 16-18 at the Expo Hall in the Orange County Convention Center, Orlando, Florida, Booth #816.

[www.sebcshow.com](http://www.sebcshow.com)



## Contact Us

Give us a call for more information about our homes

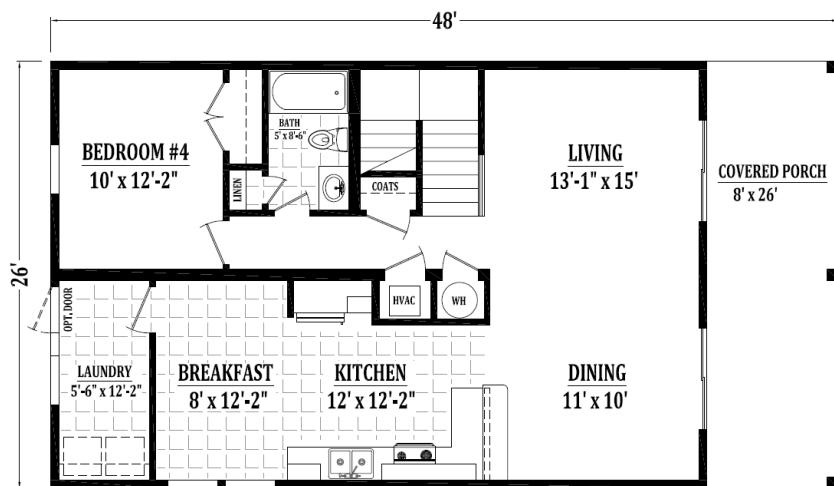
**Affinity Building Systems LLC**

P.O. Box 186  
62 Murray Blvd  
Lakeland, GA 31635

(877)260-2468  
(229)482-1200

[info@affinitybuildingsystems.com](mailto:info@affinitybuildingsystems.com)

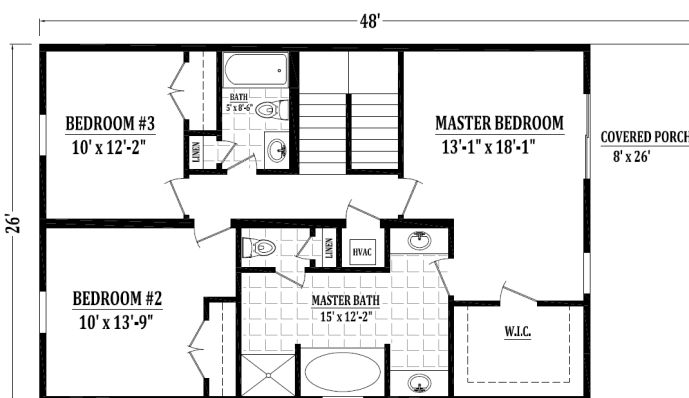
Visit us on the web at  
[www.affinitybuildingsystems.com](http://www.affinitybuildingsystems.com)



**BLUFFTON (1st LEVEL)**

2080 SQ FT HEATED/COOLED  
2487 SQ FT UNDER ROOF

If you see a bandwagon, it's too late. – *James Goldsmith*



**BLUFFTON (2nd LEVEL)**

**AFFINITY**  
Building Systems

Affinity Building Systems LLC

Similar to the Brunswick  
Elevation